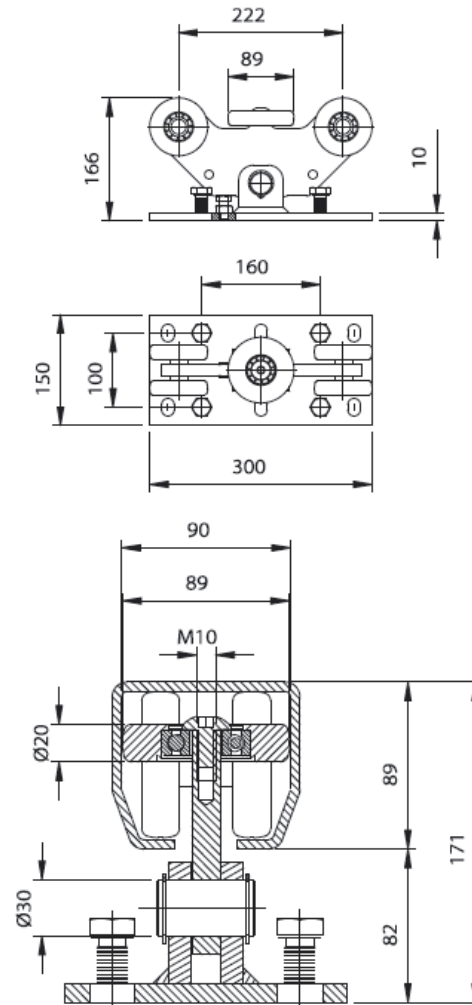
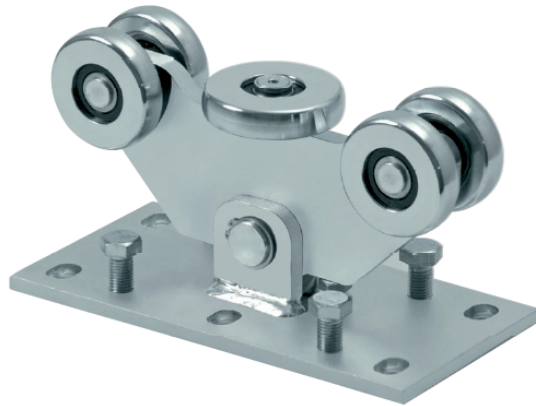



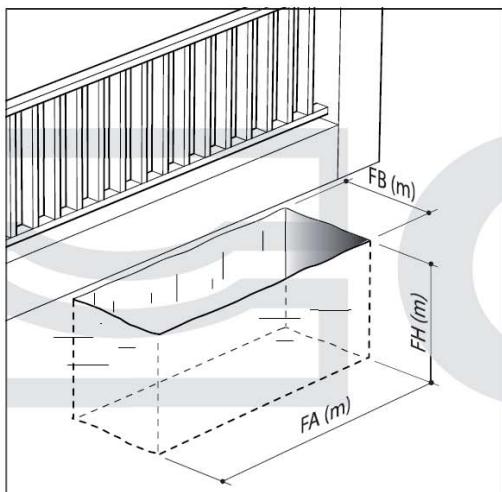
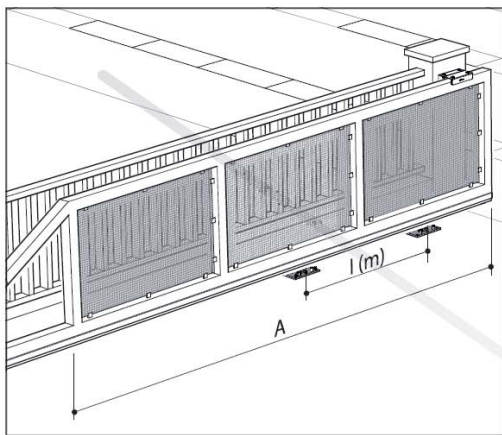


Art. CGS-350.5P



TECHNICAL CHARACTERISTICS				
				CGS-350.5P
WEIGHT OF PART				10,95 Kg
LOAD-BEARING CAPACITY (Max. weight on axis)				2000 Kgf
MAINTENANCE FREQUENCY				
PRIVATE HOME	BUSINESS	WAREHOUSE	CONDOMINIUM <20 UNITS	CONDOMINIUM > 20 UNITS
2 YEAR*	2 YEAR *	1 YEAR *	6 MONTHS*	6 MONTHS *
Check the functionality and integrity of carriages.				
Clean lower area of contact between wheels and rail				
Make sure the carriages are integral with the concrete base				
*The scheme refers to a normal workplace (not marine or particularly aggressive environments).				

Art.		Code		
CGS-350P	little	10130005 001	1	10,70



	CGS-350.5 P (F_{max} = 1000 Kg)							
	L4 m	L5 m	L6 m	L7 m	L8 m	L8 m	L8 m	L8 m
Weight (Kg)								
280	FA (m)	FA (m)	FA (m)	FA (m)	FA (m)	FA (m)	FA (m)	FA (m)
275	1,70	1,00	2,00	1,30	2,30	1,60	2,70	2,00
300	1,80	1,10	2,20	1,50	2,50	1,80	2,90	2,20
325	2,00	1,30	2,30	1,80	2,70	2,00	3,20	2,50
350	2,10	1,40	2,50	1,90	3,00	2,30	3,50	2,80
375	2,30	1,60	2,70	2,00	3,20	2,50	3,80	3,10
400	2,50	1,80	3,00	2,30	3,50	2,80	4,10	3,40
	2,70	2,00	3,20	2,50	3,80	3,10	4,50	3,80
								5,20
								4,80

