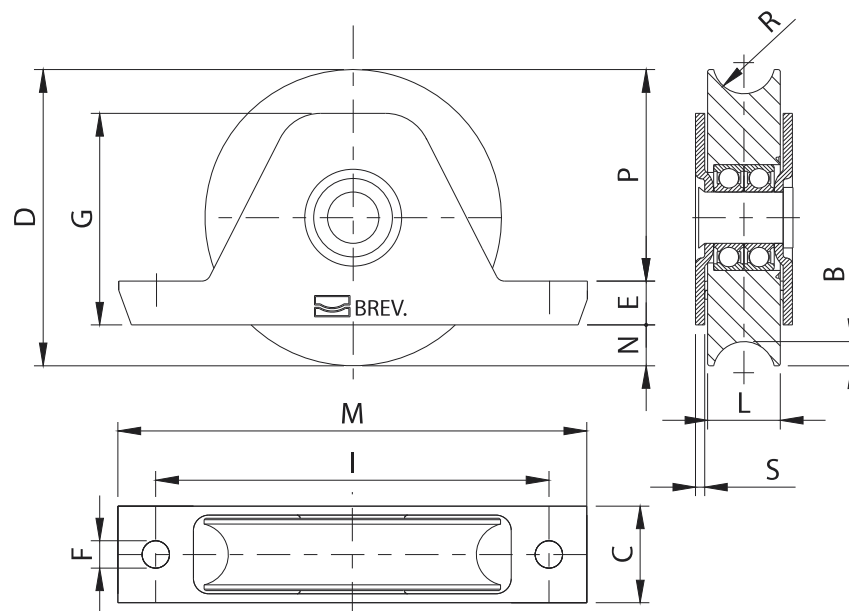




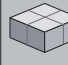



# Art. 338



TECHNICAL CHARACTERISTICS				
	WEIGHT OF PART		LOAD-BEARING CAPACITY	
338-90	1,18 Kg		300 Kgf	
338-100	1,45 Kg		380 Kgf	
338-120	2,35 Kg		400 Kgf	
338-140	3,35 Kg		420 Kgf	
338-160	5,05 Kg		640 Kgf	
338-200	8,15 Kg		700 Kgf	
MAINTENANCE FREQUENCY				
PRIVATE HOME	BUSINESS	WAREHOUSE	CONDOMINIUM <20 UNITS	CONDOMINIUM > 20 UNITS
1 YEAR *	1 YEAR *	1 YEAR *	6 MONTHS *	6 MONTHS *
Check wheel wear.				
Check fixing to upright.				
*The scheme refers to a normal workplace (not marine or particularly aggressive environments).				

Art.	Code		B	C	D	E	F	G	I	L	M	N	P	R	S					
338-90	11515530 001	2	8	32	Ø88	14,5	Ø9	55,5	130	24	155	9	64,5	10,5	3	Ø19	Ø19	300	6	7,10
338-100	11515540 001	2	8	32	Ø98	14,5	Ø9	55,5	130	24	155	14	69,5	10,5	3	Ø19	Ø19	380	6	8,70
338-120	11515550 001	2	9,5	37	Ø117	15	Ø9	65	155	28	185	16,5	85,5	10,5	3	Ø19	Ø19	400	2	4,70
338-140	11515560 001	2	9,5	40	Ø137	17	Ø11	77	175	28	205	15	105	10,5	3	Ø19	Ø19	420	2	6,70
338-160	11515570 001	2	9,5	42	Ø157	20	Ø11	87	195	33	225	20,5	116,5	11,5	3	Ø19	Ø19	640	2	10,10
338-200	11515580 001	2	9,5	42	Ø197	22,5	Ø11	107,5	240	33	275	26,5	148	11,5	3	Ø19	Ø19	700	2	16,30

