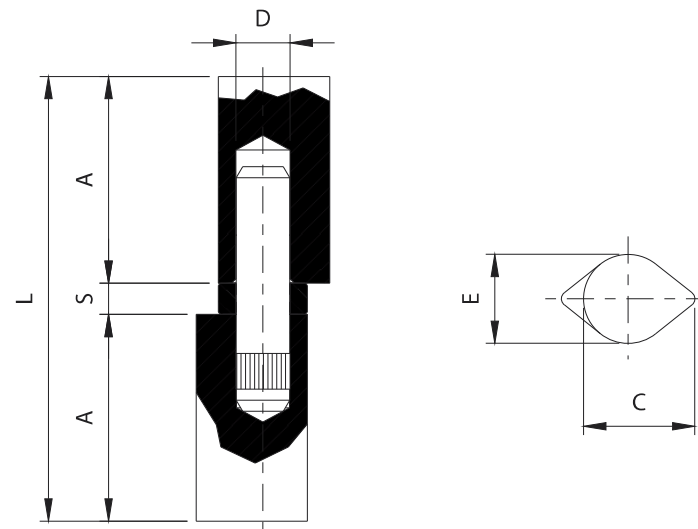


Art. 496
Art. 497
Art. 497Z



TECHNICAL CHARACTERISTICS				
	496-100	496-150		
WEIGHT OF PART	0,26 Kg	0,40 Kg		
LOAD-BEARING CAPACITY L/H=1	100 Kg (pair)	180 Kg (pair)		
PARTS SUBJECT TO WEAR	PIN WASHER	PIN WASHER		
	497-100 or 497Z-100	497-150 or 497Z-150		
WEIGHT OF PART	0,26 Kg	0,40 Kg		
LOAD-BEARING CAPACITY L/H=1	100 Kg (pair)	180 Kg (pair)		
PARTS SUBJECT TO WEAR	PIN BEARING	PIN BEARING		
MAINTENANCE FREQUENCY				
PRIVATE HOME	BUSINESS	WAREHOUSE	CONDOMINIUM <20 UNITS	CONDOMINIUM > 20 UNITS
1 YEAR *	1 YEAR *	1 YEAR *	6 MONTHS *	6 MONTHS
Check pin, washer or bearing wear.				
Check welds and horizontality of sash.				
*The scheme refers to a normal workplace (not marine or particularly aggressive environments).				

Art.	Code	A	C	D	E	L	S	Kg COPPIA	Kg	Kg
496-100	11617610	46	25	Ø12	20	100	7	100	10	2,60
496-150	11617615	71	25	Ø12	20	149	7	180	10	4,00
497-100	11615810	46	25	Ø12	20	100	7	100	10	2,60
497-150	11615815	71	25	Ø12	20	149	7	180	10	4,00
497Z-100	11615810 001	46	25	Ø12	20	100	7	100	10	2,60
497Z-150	11615815 001	71	25	Ø12	20	149	7	180	10	4,00

